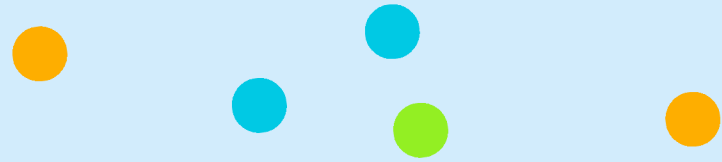


The Great Connection Panel!

ENVOLVE SCHOOLS

**Spam
The
Chat!**





Spam the Chat!

**You can only eat one
dessert every day for the
rest of your life. What are
you eating?**



Spam the Chat!

**Since winter break ended,
what is one positive
moment your leadership
class has worked to
create?**



Spam the Chat!

**What is one improvement
you want to make to your
activities program this
spring?**

Ground Rules!

Let's make your schools better!

RULE 1

Be an incredible listener.

RULE 2

**Be an amazing hype
person.**

RULE 3

Participate in the chat!



TONIGHT'S Plan!

1

**SPARKING
ENGAGEMENT**

2

**WINTER
WELLNESS**

3

**SPRING
ACTIVITIES**

4

**QUESTION &
ANSWER!**



TONIGHT'S Plan!

1

**SPARKING
ENGAGEMENT**

2

**WINTER
WELLNESS**

3

**SPRING
ACTIVITIES**

4

**QUESTION &
ANSWER!**



Sparking Engagement

**What is the best activity
your leadership program
has created so far this
school year?**



Sparking Engagement

**What is the best low-risk
activity your school uses to
foster kindness and
compassion?**



Sparking Engagement

What is your biggest piece of advice for engaging students, especially those who are less involved?



TONIGHT'S Plan!

1

**SPARKING
ENGAGEMENT**

2

**WINTER
WELLNESS**

3

**SPRING
ACTIVITIES**

4

**QUESTION &
ANSWER!**



Winter Wellness

What are some creative ways to keep students motivated during the winter months?



Winter Wellness

**How do you balance fun
with mental wellness and
self-care during this
season?**



Winter Wellness

What's one simple, low-cost activity that has been a success in the winter?



TONIGHT'S Plan!

1

**SPARKING
ENGAGEMENT**

2

**WINTER
WELLNESS**

3

**SPRING
ACTIVITIES**

4

**QUESTION &
ANSWER!**



Spring Activities

**What is your favorite event
that your program creates
each spring?**



Spring Activities

**What are some tried and
true activities that work
well every year?**



Spring Activities

**What are your favorite
methods for recognizing
teachers and staff in the
spring?**



TONIGHT'S Plan!

1

**SPARKING
ENGAGEMENT**

2

**WINTER
WELLNESS**

3

**SPRING
ACTIVITIES**

4

**QUESTION &
ANSWER!**

The Great Connection Panel!

ENVOLVE SCHOOLS